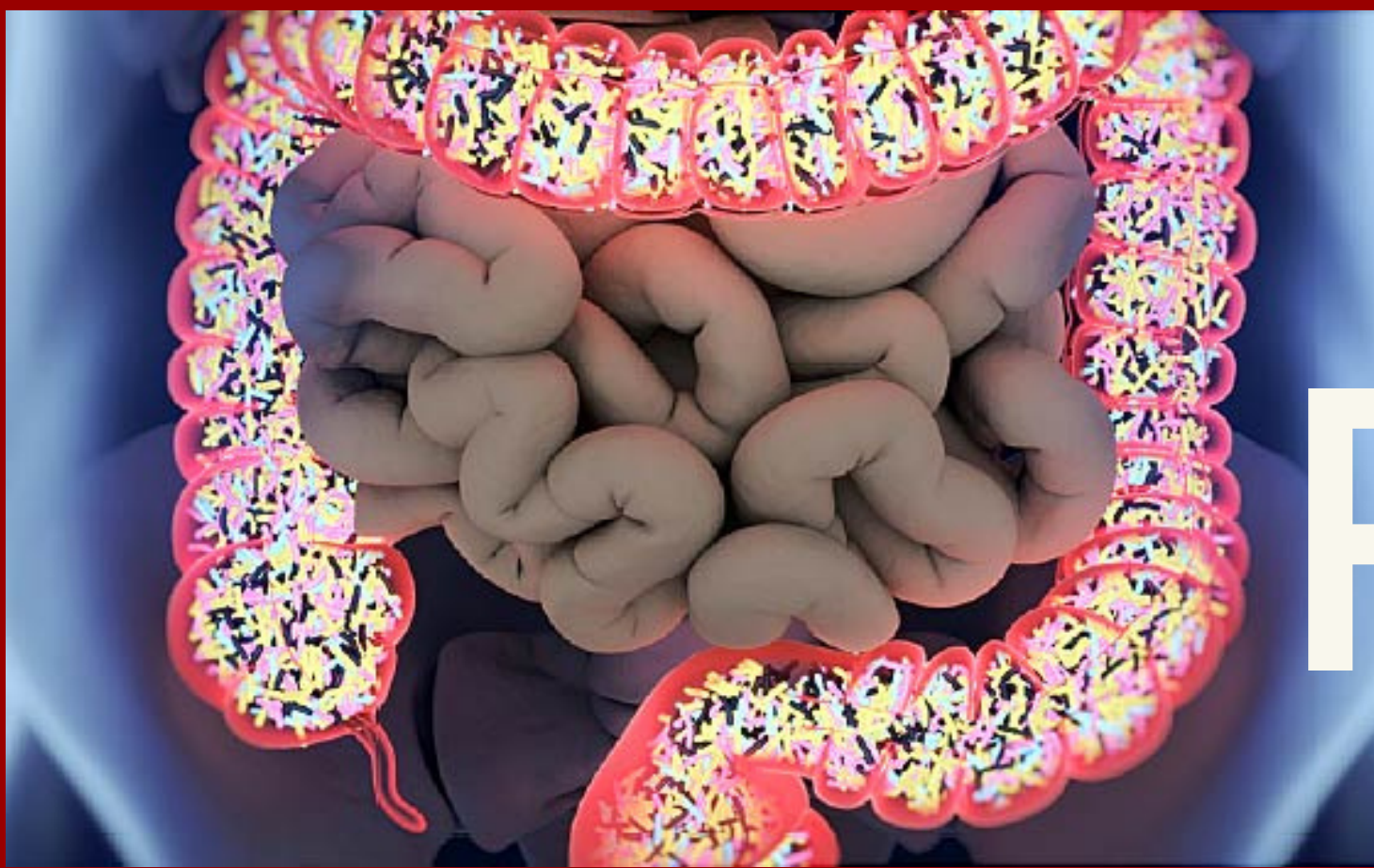


USC Neuroplasticity and Imaging Lab  
Biokinesiology and Physical Therapy

IRB #:UP-20-01394



# JOIN OUR NEW STUDY IN GUT HEALTH & PARKINSON'S DISEASE

**WE ARE CONDUCTING A RESEARCH STUDY LOOKING AT THE RELATIONSHIP BETWEEN GUT HEALTH & FITNESS IN INDIVIDUALS WITH PARKINSON'S DISEASE.**

## **WHO'S ELIGIBLE?**

- Men and Women at least 60 years old
- Diagnosed with Parkinson's disease
- Free from other neurologic diseases
- Are willing and able to collect their own stool sample.

## **WHAT'S INVOLVED?**

You will be asked to collect a stool sample, perform various tests of physical fitness, physical function, and cognition, and to have your blood drawn.

These tests will be done in our lab with COVID-19 safety precautions taken.

**ARE YOU INTERESTED IN PARTICIPATING??**

Contact Kaylie Zapanta: [kzapanta@usc.edu](mailto:kzapanta@usc.edu) | (949) 303-3718